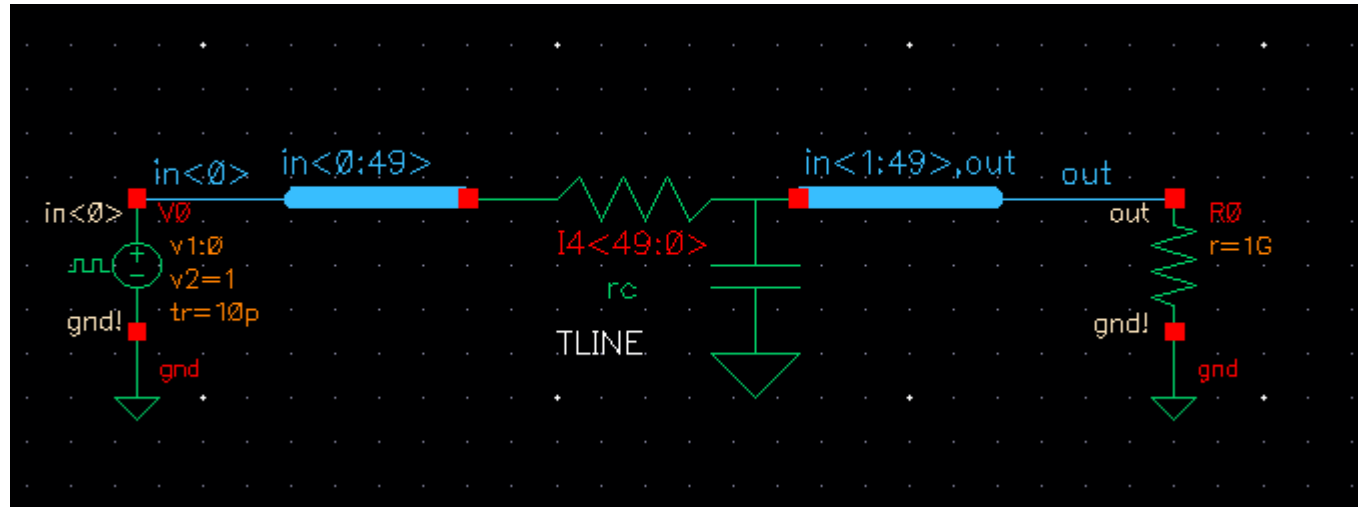


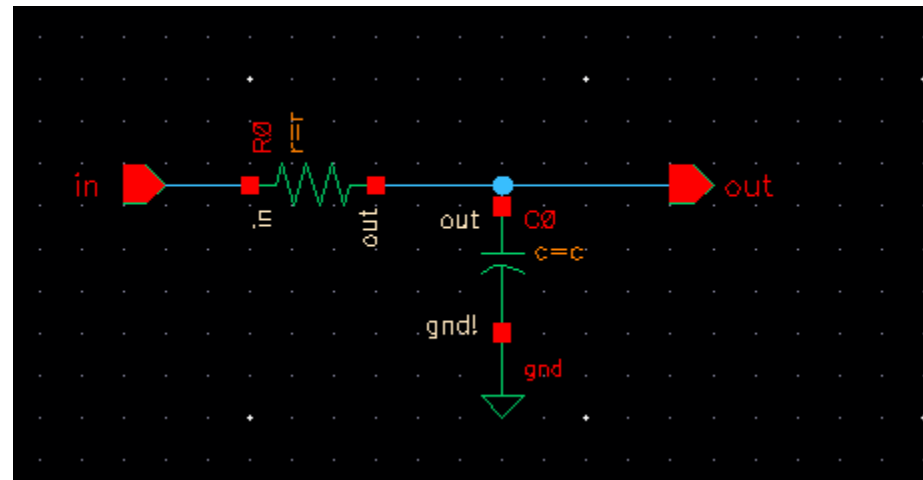
Using Iterative Nets in Cadence



Here

- There are 50 instances of an RC cell, $I4<49:0>$
- $\{in<0:49>\}$ are inputs to individual instances of the RC cell
- $\{in<1:49>, out\}$ are the outputs of the individual instances of the RC cell
- For example, the first RC cell has $in<0>$ as its input and $in<1>$ as the output, which in turn is the input to the second instance
- out is the output from the last instance

The RC unit cell



- <https://mixedsignal.wordpress.com/2011/03/13/top-ten-tips-on-schematic-entry-in-cadence/>