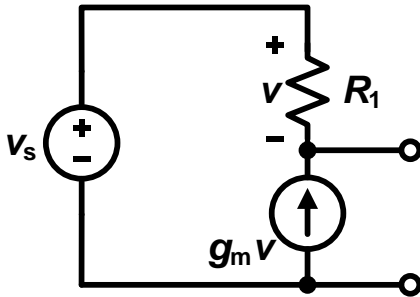
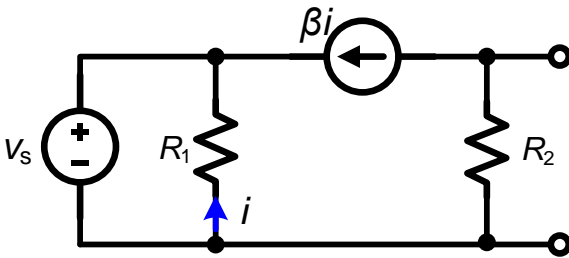


HW #1**1. Review of Circuits Theorems:**

- a) Find the *Thevenin* and *Norton* equivalent representations of the circuit below. Here, $g_m=0.002S$ and $R_1=50k\Omega$.



- b) Find the Thevenin equivalent representation of the circuit below. Here, $\beta=120$, $R_1=100k\Omega$ and $R_2=39k\Omega$.

**2. Textbook problems 2.2, 2.3, 2.4, 2.5, 2.7.**