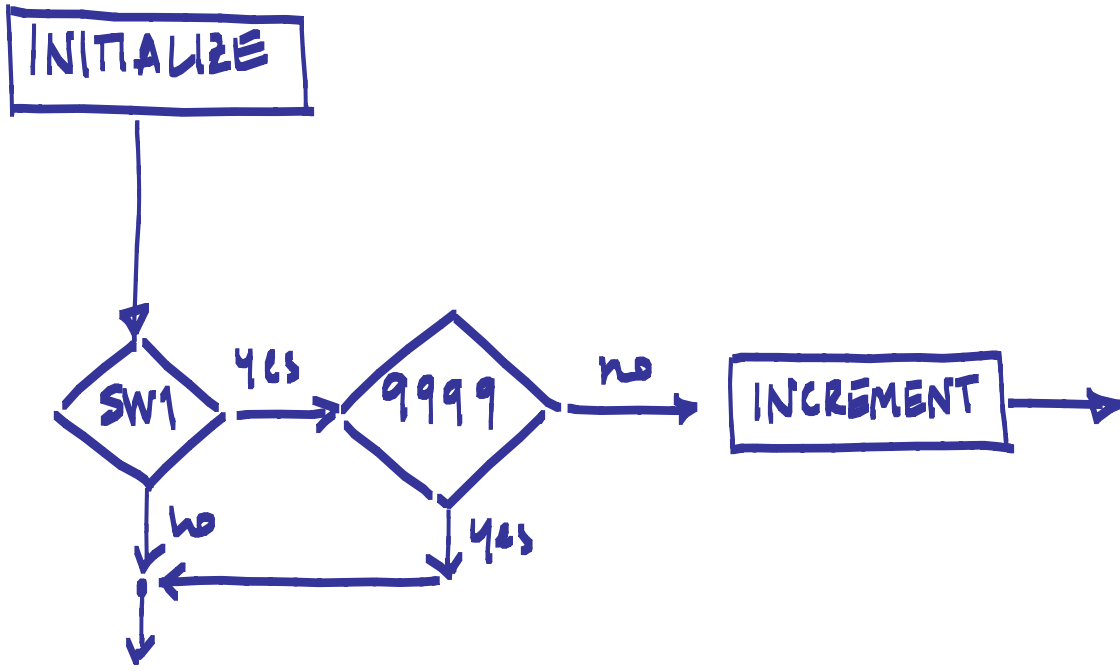


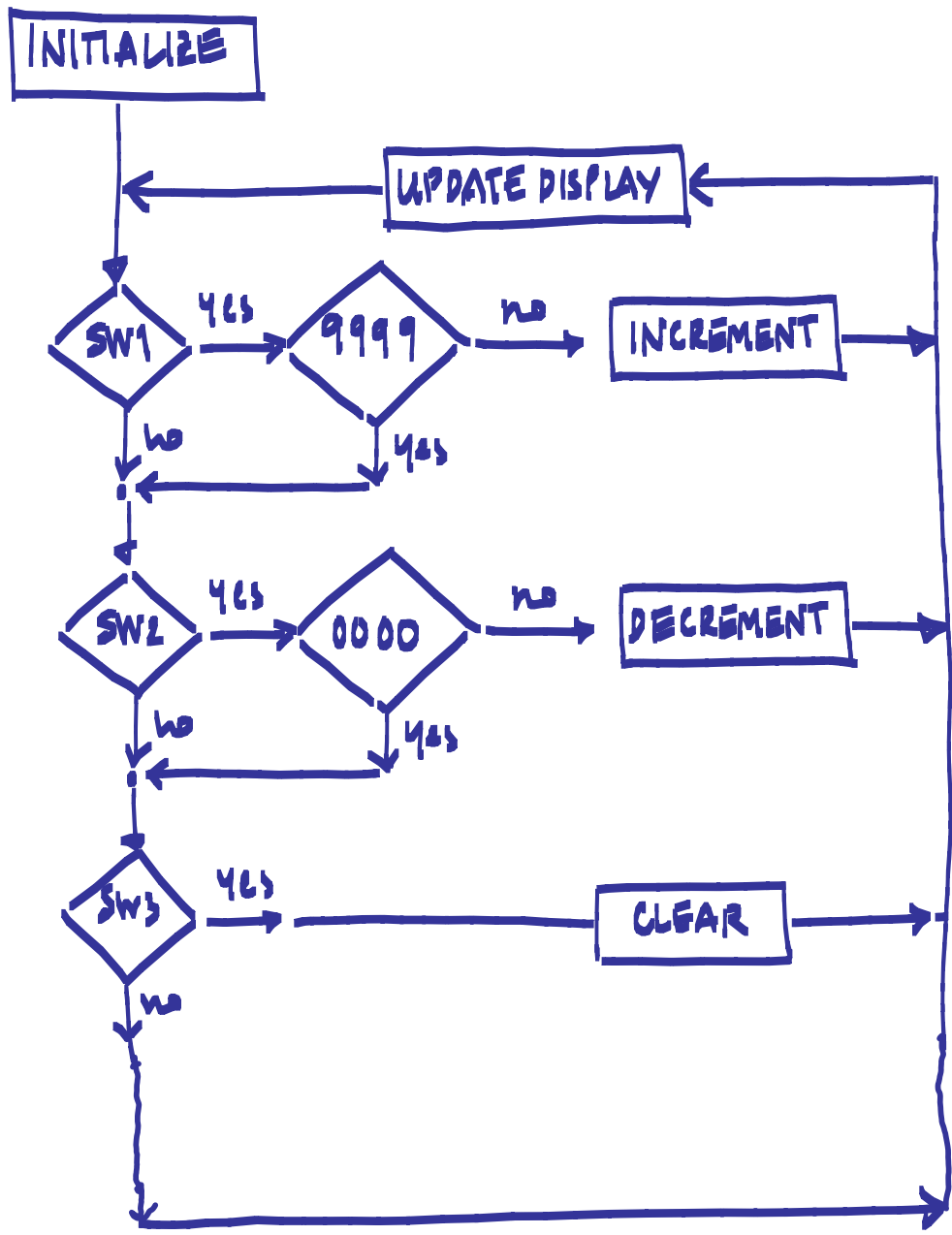
QUIZ Ø

Draw the MACRO FLOW DIAGRAM for PROJECT 1

MACRO FLOW DIAGRAM FOR THE SIMPLE COUNTER



LET'S EXPLORE THE BUILDING BLOCKS

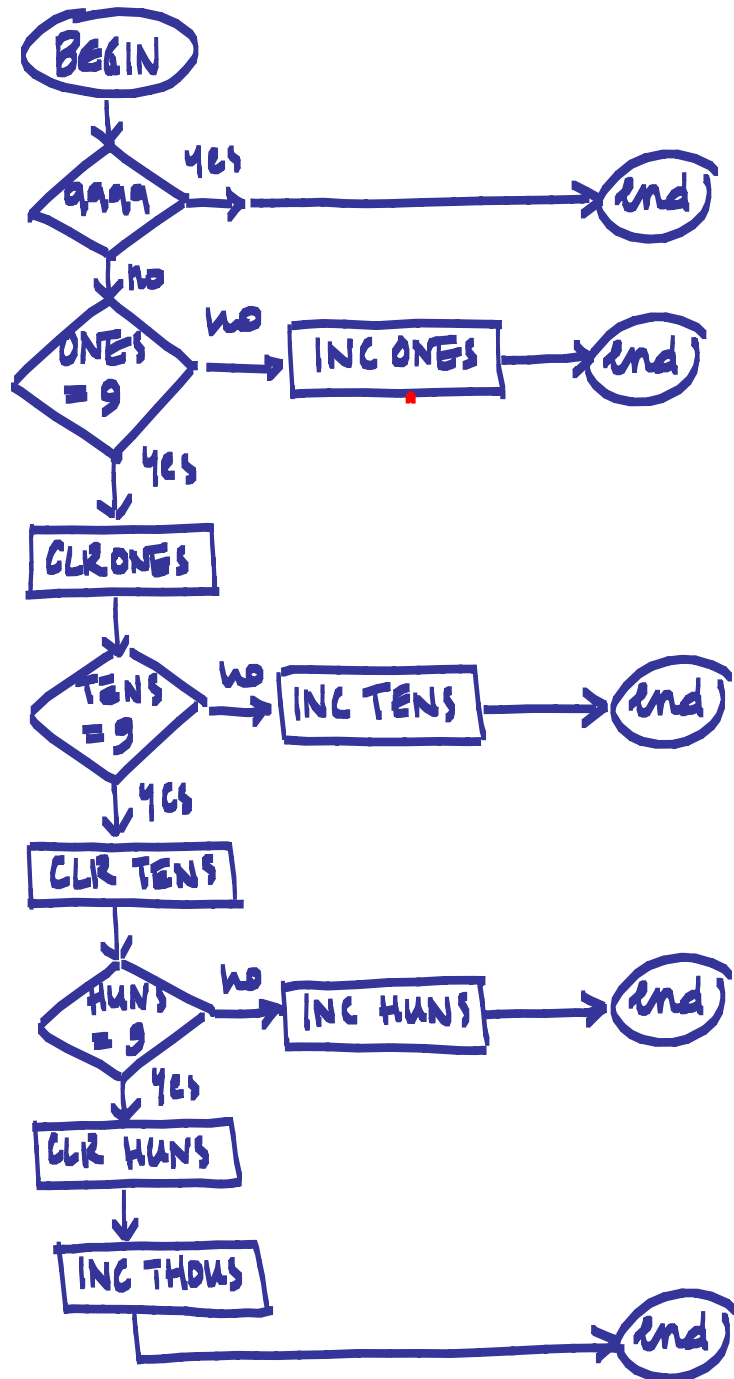


QUIZ 1

Build the flow diagram for the incrementing subroutine

NOTE that it must check for 9999 and it must be able to go from 1299 to 1300 when the user presses the inc button!

FLOW DIAGRAM FOR INCREMENTING



QUIZ 2

Build the flow diagram for the DISPLAY UPDATE SUBROUTINE



IMPLEMENTATION STRATEGY

Because there's a lot of room for human mistakes, we want to develop a baby step, safe approach in our implementation.

PREREQUISITES:

Hardware diagrams are ready

Detailed software architecture is ready

} Meaning...

Schematics & flow diagrams are done in detail.

So at this point we are very familiar with the way the project should work, with the components in HW & SW terms, with the flow diagrams, etc.

The question is

SHOULD WE START CODING THE ENTIRE PROJECT & TEST IT WHEN WE ARE DONE?

Or rather...

The bottom line is then to BE ABLE TO _____ THOSE SMALLER _____ OF THE PROJECT THAT MAKE SENSE

IMPLEMENTATION STRATEGY

(1)

(2)

(3)

(4)

(5)

